

LED LIGHTING

USER MANUAL

VERSION:A0

目录

DIRECTORY

01_P__ Product introduction

“Point Series”-----2

“Line Series”-----3

“Face Series”-----4

02_P__ Safety Instructions

Important Notes-----5

03_P__ Product Connections

Connection diagram-----7

04_P__ Software Debugging

Software Operation-----8

05_P__ Addenda

FAQ-----10

After-sales service instructions-----12

Non-after-service guarantee scope-----14

Product introduction:



LED point light 40D



LED point light 50C

The "Point" series of products is one of our company's lighting product series. It has the advantages of low power consumption, bright colors, anti-vibration, long service life, cold light source, easy installation, flexible control, etc. (regarded as a modern "green lighting source"), and is an ideal product for building outline decoration, outdoor advertising signs, indoor bars, KTV entertainment venues, etc.

Features:

- Use 3pcs 1W high-power LED as light source
- High brightness, easy maintenance, easy to install
- The distance between the lamps can be adjusted and customized at will, and the maximum distance between two lamps can reach 50 cm
- Unique shape, aluminum alloy cover
- DMX512 control system, SD card controller or computer controller for choice
- Can play a variety of lighting effects, pictures, animations and video effects
- Suitable for lighting of outdoor buildings, bridges, towers and various lighting decorations

Product introduction:



U20Tube light



U24Tube light



U38Tube light

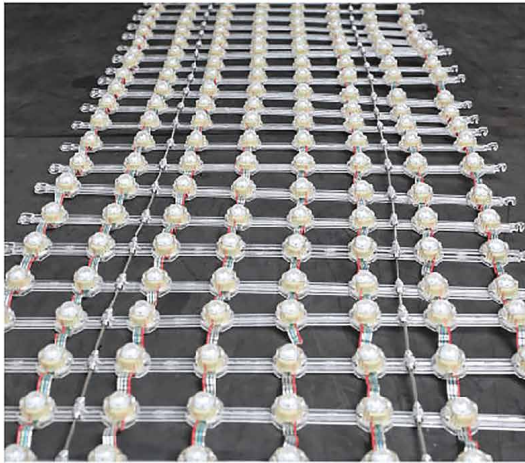
The "Line" series products are one of our company's lighting product series. They have the advantages of low power consumption, bright colors, anti-vibration, long service life, cold light source, easy installation, flexible control, etc. (they are regarded as the "green lighting source" of the times) and are ideal products for building decoration, outdoor advertising signs, indoor bars, KTV entertainment venues, etc.

Features:

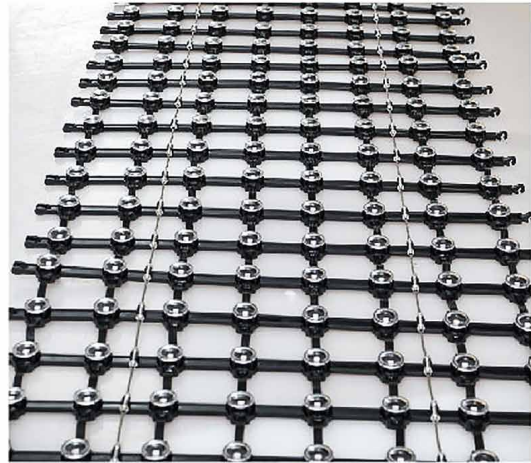
- Use high-quality SMD LED as light source
- Beautiful shape
- Aluminum alloy base, transparent acrylic shell, waterproof grade up to IP65, viewing angle
- It can realize various effects such as color changing, chasing, gradient, strobe, etc. Also can display pictures, play animations, videos
- DMX512 control system or computer control system for choice

Product introduction:

P50/P100netscreen transparent



P50 /P100netscreen black



The "face" series of products is one of our company's lighting product series. It is transparent, flexible, light, easy to install and maintain, and is the new favorite for large-scale building facades and glass curtain walls, large-scale stage activities, creative design, and landscape lighting of city.

Features:

- Use Good-quality high-brightness SMD5050 LED lights
- High quality PC mask, curved PC mask with good transparency
- Protection grade IP67, long service life
- The product is small in size and light in weight. It can be installed in a variety of different ways with soft iron wire. It is easy to bend, roll, hang and fold. It can be freely combined into any shape, and the distance and size of the lights can be adjusted.
- DMX512 control system or computer control system for choice

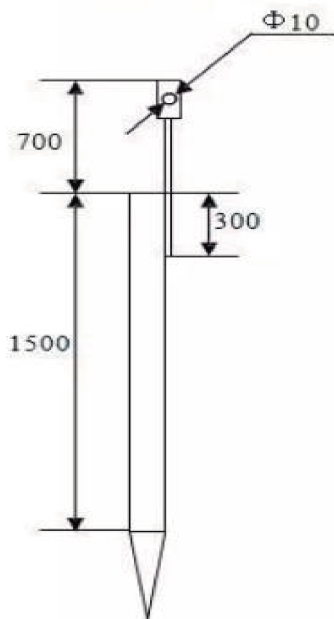
Instructions for safe use

- Do not repair or disassemble parts by yourself (unless there are special instructions in the manual to require).
- Do not allow too many electrical appliances to share the same socket with this product.
- The product should be used away from flammable, explosive, high temperature and highly corrosive environments.
- All switching power supplies must be well grounded to avoid affecting the service life of the LED.
- Avoid getting the power cables entangled with other wires and do not bend the power cord excessively.
- Before power-on debugging, make sure all wires is correct before powering on to avoid damage to the lamp due to wiring errors.
- Please be sure to use the power supply that comes with the product and make sure that the power supply voltage used is consistent with the voltage required by the product.
- Strong wires, weak wires and signal wires cannot be in the same wire duct, and strong wires must be placed in isolation protective tubes.

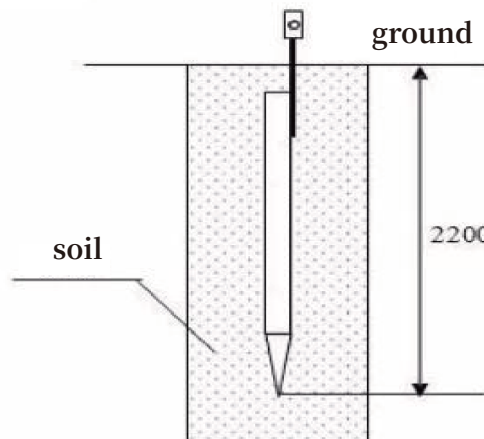
Important Notes

- ◆ The red and black power cables for lighting power supply need to be ≥ 1.5 Square.
- ◆ The ground wire used for lighting power supply must be independent and effective, and cannot be used together with the on-site power supply ground wire.
- ◆ As shown in the figure below, the grounding body must be driven into the ground for more than 2 meters to effectively ensure the normal use of the ground

Schematic diagram of grounding structure

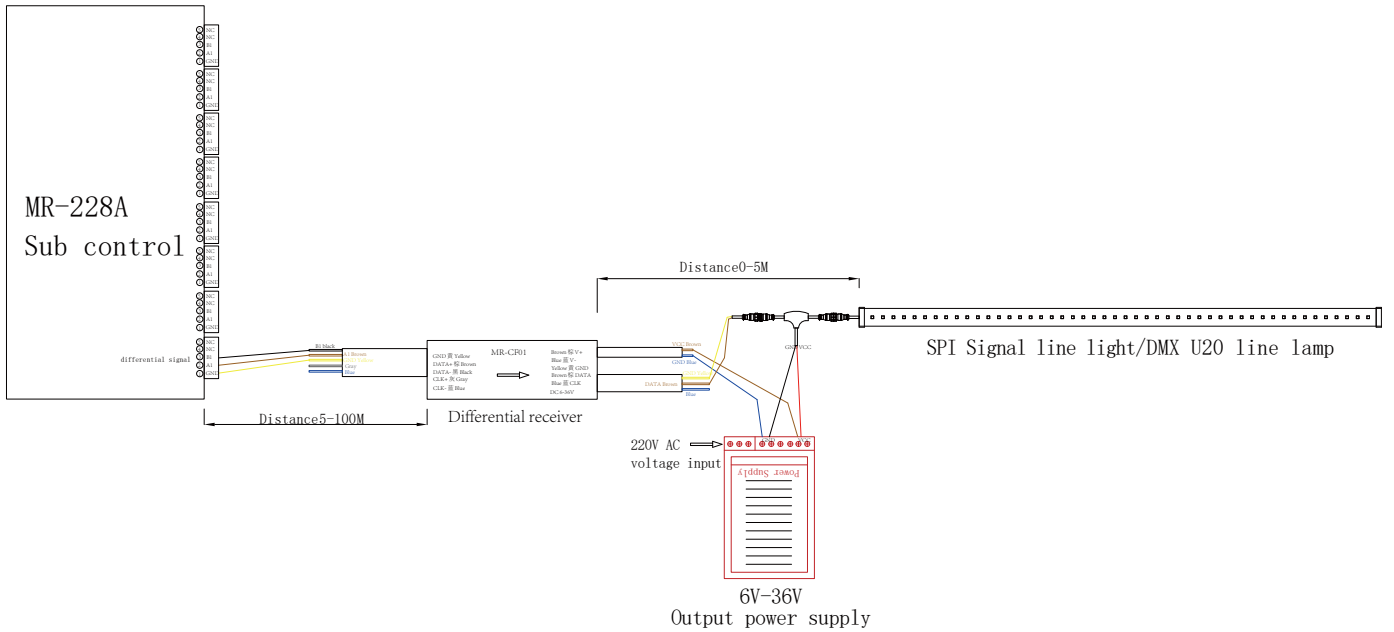


Installation diagram of grounding body



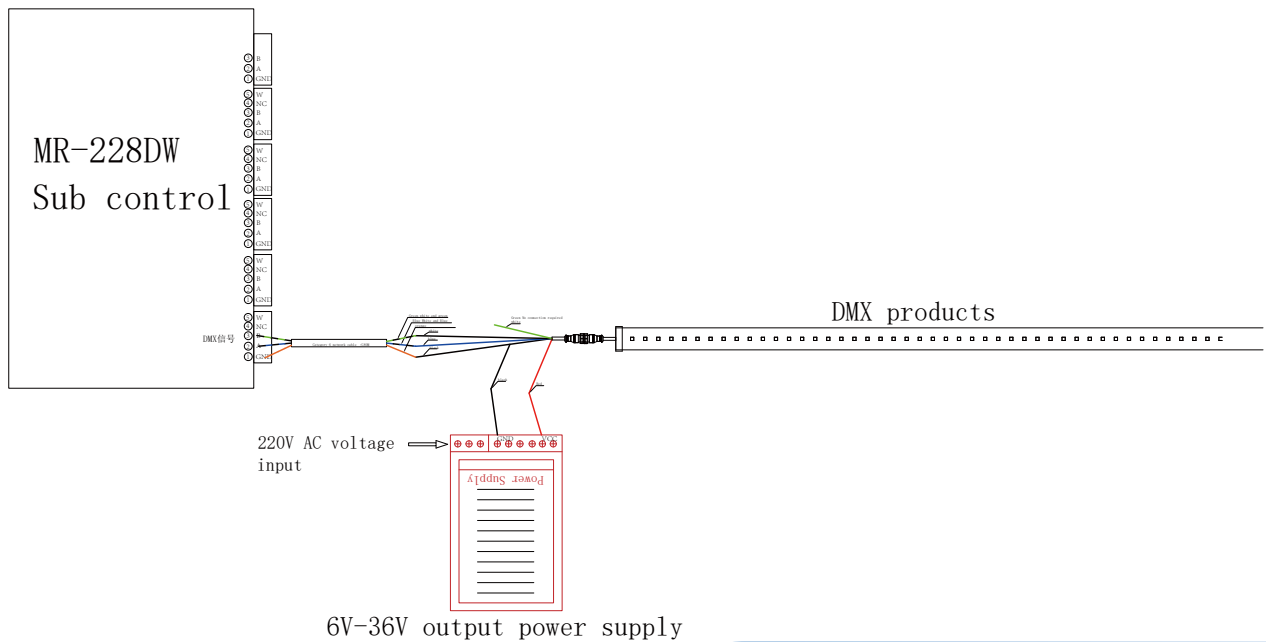
● SPI Connection Diagram

Due to different batches or orders, the definition of the differential receiver color line may not match the picture, please refer to the actual label



● DMX Connection Diagram

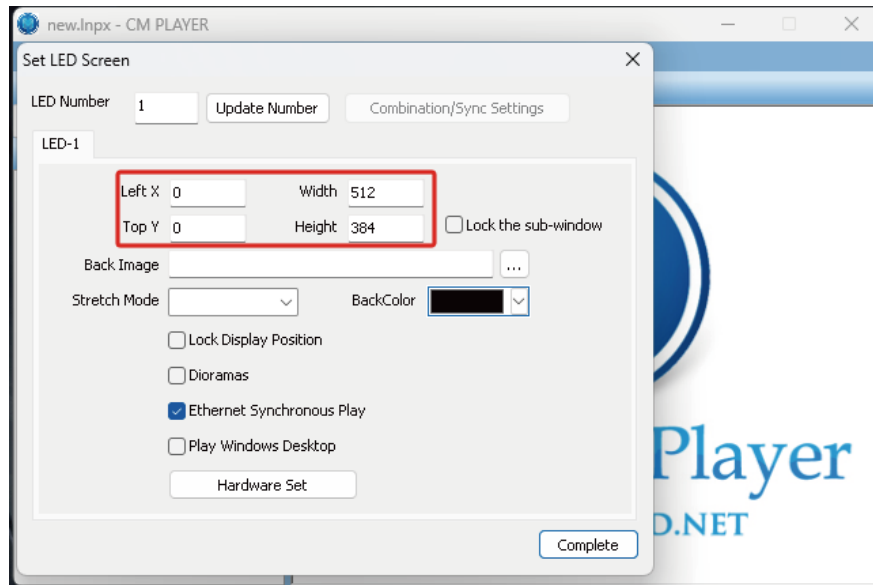
Due to different batches or orders, the definition of the differential receiver color line may not match the picture, please refer to the actual label



Software Operation

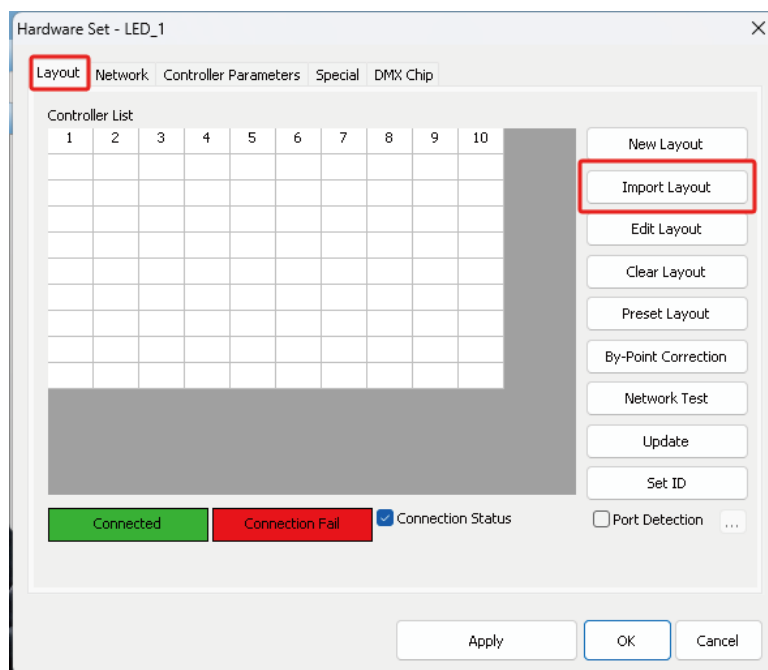


1. Double-click the software icon on the computer desktop. Enter the home page, select the "Settings" option, click the "LED Screen Settings" option, and set the playback window position and size in the control area, as shown below:



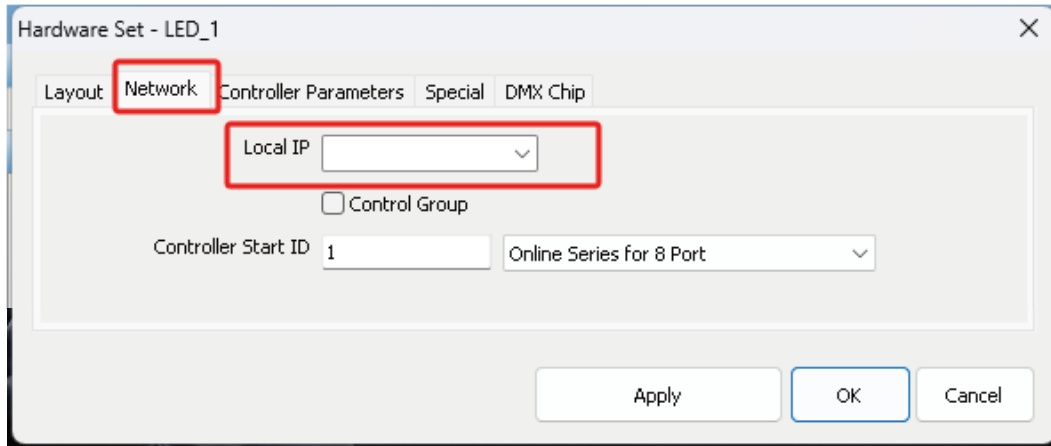
2. Click the "Hardware Settings" option, enter the password "cm" in the "Password Box" window that pops up, and click "OK" to enter the hardware settings interface.

3. Select the "Lighting Layout Settings" tab, click the "Import Lighting Layout" option, select the loading file in the loading folder provided by the factory, click "Open" to open the loading file to be loaded, and click "OK" as shown in the figure:

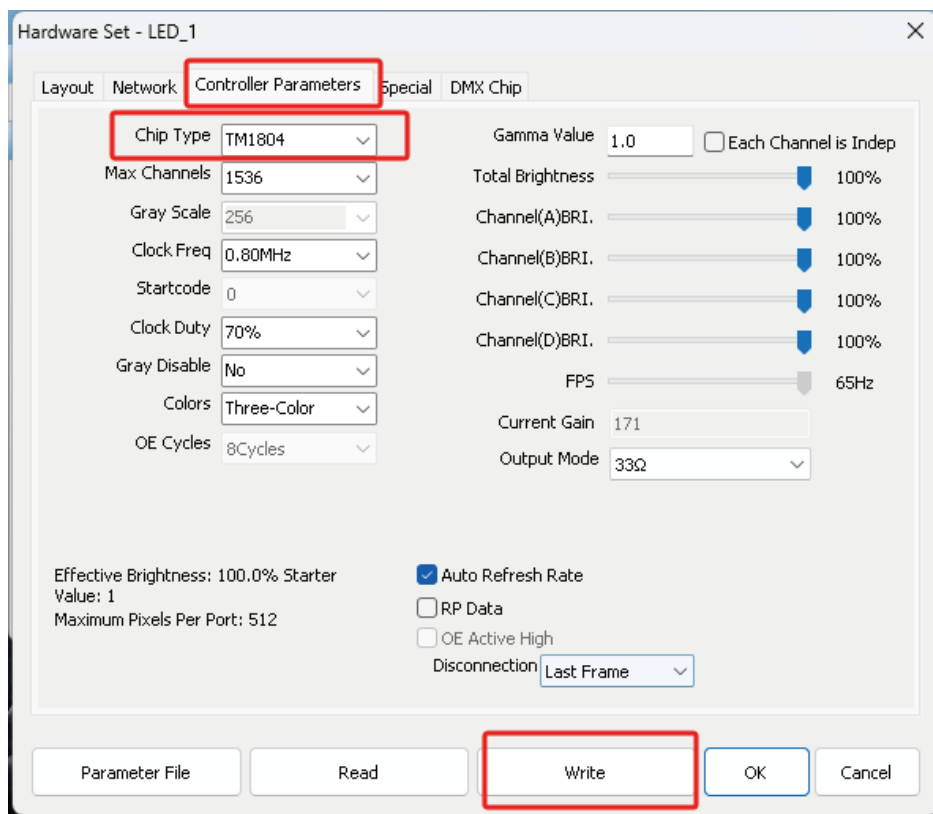


Software Operation

4. Select the "Network Settings" tab, select the IP address corresponding to the computer, and click "OK" as shown in the figure



5. Select the "Controller Parameters" tab, select the chip corresponding to the lamp, click "Write Hardware Parameters", enter the software password "led888", and click "OK". As shown in the following figure



FAQ

Q:After installing the product, the lighting does not work. What should I do?

A:For LED lighting to operate normally, the following conditions must be met:

1.Is the lighting software running?

2.Is the network cable interface loose? Is the interface in good condition?

Is the software IP setting normal?

3.If the software settings are checked normally but the light is still off, please check whether the sub-control port is connected correctly and try to replace the receiver.

4. Check whether the switching power supply of the lighting is 220v and whether the output voltage is also the normal voltage of this product.

5.Skip the first Lighting and use the brightness and animation of the second lighting as a benchmark to detect signal problems with the first lighting.

All of the above must be confirmed step by step using the method of elimination. The most common problem is that when the power is turned on, the instantaneous current is too large, which will impact and damage electronic components.

Q:After the lighting is powered on, there are lights, flashing lights, and poor contact. What is the problem?

A:Check if the signal cable connecting the two lighting is loose or damaged, and replace the signal cable to see if it works properly. Replace the problematic lighting to see if it works properly. If not, replace the lighting in front of the problem.

Note:

1:Please do not operate with power on, as this may easily damage electronic components and cause unnecessary trouble for daily maintenance.

2:Connect a good-quality ground wire to the iron frame or other metal at the installation site.

3:Non-professionals are not allowed to install, unload, maintain or perform other operations on the product at will. We will not provide warranty for serious damage.

After-sales service instructions

◆Except for human-made damage and irresistible natural disasters, this product is free of charge for twelve months and has lifetime technical maintenance. The main power input terminal (AC220V) should be equipped with a leakage protection switch, and the power supply should be grounded. If the LED is damaged in batches due to the lack of grounding, the consequences are at your own risk.

◆Do not disassemble it without permission during the warranty period, otherwise we will not provide technical support.

Service

After-sales service instructions (Customer information)

In the spirit of "high quality, excellent service, and development", with the concept of "high-quality products, reasonable prices, and considerate services" and the principle of responsibility and openness, Charming Group solemnly promises to you:

1.The products are issued with inspection certificates and detailed installation instructions to ensure that users can correctly install and use our group's products, as well as answers to common questions and timely solutions for users.

2.After the products are shipped, the Group will fax or scan a shipping list to the user. Please receive the goods according to the shipping list and check them one by one. If you find any damage, please do not sign for them and contact the Group in time. The Group will communicate with the logistics company and tell the user the negotiation results. If the user does not check and finds damage or missing goods in the future, all losses will be borne by the customer.

3.The Group guarantees that all products shipped out of the factory are produced and inspected in accordance with relevant national standards, and unqualified products will never be shipped out of the factory. The Group guarantees to strictly perform and honor the three guarantees of products and strictly implement the relevant provisions of the national industrial product after-sales service. For the whole set (the Group guarantees all component products for one year) of products shipped out of the factory within six months from the date of shipment or within twelve months of product installation (whichever comes first), if the buyer can prove that the product itself has design, material or processing defects and submits a written application to the Group, the Group will recall or replace the defective products free of charge.

4.If a user raises a quality objection to the Group's products, the Group guarantees to make a handling suggestion by phone or email within 24 hours after receiving the user's objection. If an on-site solution is required, after consultation, professional technical service personnel will be dispatched to the site to solve the problem, and the service personnel will not leave until the quality problem is solved. The Group will archive the product quality problems reported by each user and the results of the handling

5.Fee Description:

(1)If the customer finds that a part of the Group's products is damaged during use, the customer must first return the damaged part to the Group; the Group will test the part and analyze the cause; if it is a quality problem of the Group's products, the Group will bear the freight and repair or replace it free of charge; if it is found after testing that it is not a quality problem of the Group's products, the Company will charge the corresponding fee according to the ex-factory price of the product. If the customer refuses to pay, the Group will stop providing after-sales service.

(2)If the defective products are within the warranty scope, the Group will provide free repairs if they are repaired according to general standards; if they are repaired according to delivery standards, the Group will charge a certain cost according to the specific circumstances. If the defective products are not within the warranty scope, the Group will provide free repairs if they are repaired according to general standards; if they are repaired according to delivery standards, the Group will charge the corresponding cost of the entire set of products according to the specific circumstances.

(3)In any case, the Group shall not be liable for labor, materials, equipment, engineering or other related joint expenses caused by the repair or replacement of defective products. The Group's after-sales service commitment can replace other express or implied product quality guarantees and can be regarded as the buyer's sole compensation and the seller's sole liability.

Non-after-service guarantee scope:

1、Damage caused by improper use, use environment and force majeure (such as flood, fire, earthquake, lightning strike, etc.) and other human or objective factors are not covered by the warranty. If the product can be repaired, the Group can still provide repair services, but charge the corresponding fees according to the repair fee standards. If the product cannot be repaired, the Group will no longer provide after-sales services such as repair and return.

2、For products beyond the warranty period, the Group will charge corresponding fees according to the repair fee standards.

3、The transportation costs incurred by the above after-sales services shall be borne by the customer.

Note:

The above warranty period is the minimum warranty period promised by the company for the product. The company does not undertake free repairs and replacements outside the warranty period. This system is revised every six months according to specific circumstances, and the new version naturally replaces the old version.

The above after-sales service terms are subject to the final interpretation of Charming Group. If new regulations are introduced, they shall prevail and the original regulations shall be automatically terminated.

科而美集团

CHARMING GROUP

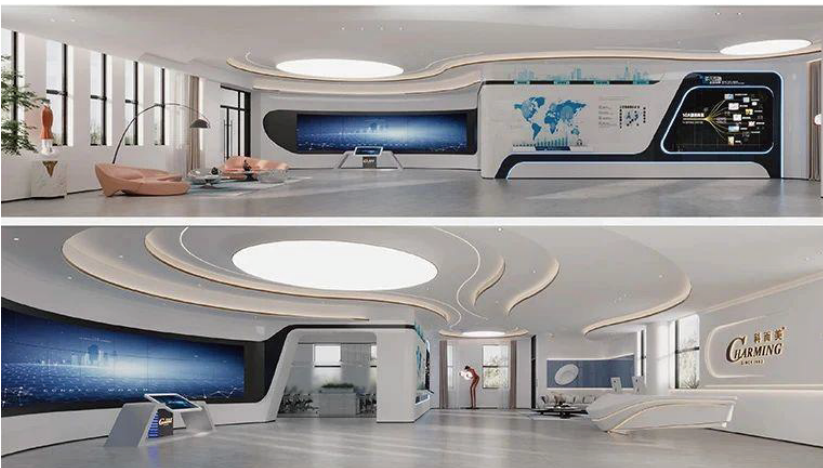


CHARMING is an LED display application enterprise that integrates production, sales, and research and development. It has obtained certificates such as "Guangdong Province Specialized, Refined, Unique, and New Small and Medium sized Enterprise", "National High tech Enterprise", "Guangdong Province Innovative Small and Medium sized Enterprise", "Foshan Gazelle Enterprise", and "LED Display Module Group Standard Drafting Unit". It has developed into a world-class entertainment commercial display LED intelligent manufacturer.

CHARMING

科而美集团旗下公司

CHARMING GROUP COMPANY



广东科而美光电有限公司
CHARMING CO.,LTD

佛山·南海
Foshan · Nanhai



美国公司
C&E TECH USA INC
美国·洛杉矶
Los Angeles, USA

MADRIX · 中国
MADRIX CHINA
佛山·南海
Foshan · Nanhai

