

LED SCREEN

USER MANUAL

VERSION NUMBER:A0

目录

DIRECTORY

01_P__Precautions

Precautions-----2

03_P__Outdoor product introduction

Outdoor product-----5

application range-----5

05_P__Product Installation

Module installation method-----7

Box installation method-----8

Fixed installation instructions-----9

Lifting operation instructions----10

Product Usage Notes-----11

07_P__Software Operation

Software Operation-----13

09_P__After-sales service

After-sales service-----21

02_P__Indoor product introduction

Indoor product-----4

application range-----4

04_P__Accessories

Accessories-----6

06_P__Connection diagram introduction

System connection diagram-----12

DVI/HDMI, USB Line connectio-----12

08_P__Common problems and solutions

Common problems and solutions-----18

10_P__Non-after-sales service warranty

Non-after-sales service warranty-----23

一、注意事项



Please make sure you understand and follow all safety guidelines and instructions before installing, switching on, operating and maintaining this product.



Read the manual!

Please read this manual carefully and follow the safety instructions in this manual and the product. If you have any questions, please seek help from the technical staff of Kermei Group.



Beware of electric shock!

- ① To prevent electric shock, the device must be properly grounded during installation. Do not neglect to use a grounded plug, otherwise it may cause electric shock.
- ② During thunderstorms, disconnect the power supply to the device, or provide other appropriate lightning protection. If the device is not used for a long time, unplug the power cord.
- ③ When performing any installation or maintenance work, always turn off the main switch. Disconnect the AC power supply when the product is not in use or before removing or installing the product.
- ④ The AC power supply used by this product must comply with local building and electrical codes and should be equipped with overload and ground fault protection devices.
- ⑤ The main power switch should be installed close to the product and should be clearly visible and easy to reach. This way, the power supply can be disconnected immediately in the event of any fault.
- ⑥ Before using this product, check all power distribution equipment, cables, and all connected devices and ensure that they meet current requirements.
- ⑦ Use an appropriate power cord. Please select a suitable power cord according to the required power and current capacity, and ensure that the power cord is not damaged, aged or damp. If overheating occurs, please replace the power cord immediately.
- ⑧ If you have any other questions, please consult a professional.

Beware of fire!

Use circuit breaker or fuse protection to avoid fire caused by overloading the power cable.

To avoid fire caused by overloading the power cable, do not connect more than 5 products to the same power point at 100-120V or more than 10 products at 200-240V.

Keep good ventilation around the display, controller, power supply and other devices, and keep a distance of 0.1 meter from other objects.

Do not stick or hang anything on the screen.

Modification of the product, or addition or deletion of parts without permission is prohibited.

Do not use this product when the ambient temperature exceeds 50°C.



Please wear a helmet during installation and maintenance to avoid injury. Make sure that any structure used to support, fix and connect the equipment can withstand at least 10 times the weight of all the equipment.

When stacking products, hold them firmly to prevent them from tipping or falling. Make sure all components and steel frames are securely installed.

When installing, repairing, or moving the product, make sure the work area is free of obstacles and that the work platform is securely fastened.



Do not look directly at the illuminated screen within 1 meter without proper eye protection.

Do not use any optical device with convergence function to view the screen to avoid eye damage.



The LED lights used in the module are sensitive and can be damaged by ESD (electrostatic discharge).

To prevent damage to the LED lights, do not touch the product while it is operating or turned off.



The manufacturer assumes no responsibility for any incorrect, inappropriate, irresponsible or unsafe installation of the system!

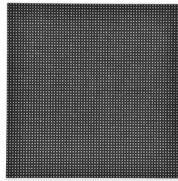
Indoor product introduction

2-1 Product Feature

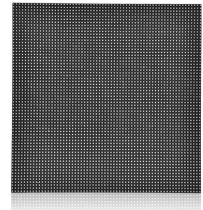
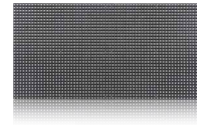
1. High-quality lamp tubes, efficient lamp tube brightness utilization, while ensuring the service life of the lamp tubes and high-quality plastic parts
2. High contrast can achieve good display effect
3. Lightweight and easy to install and disassemble
4. Single point and single lamp maintenance is possible, with low cost
5. Constant current is used to drive LED, which can emit light evenly and consume low power.



320*160mm



192*192mm



256*128/256*256mm

2-2 Indoor product application range

Indoor modules are display products that are fixedly installed indoors, and are mainly used in conference rooms, exhibition halls, multimedia, security monitoring, multi-function halls, public transportation, etc. They serve as a medium for playing videos and disseminating information.



Outdoor Product Introduction

3-1 Product Feature



RentalSeries



Transparent Series



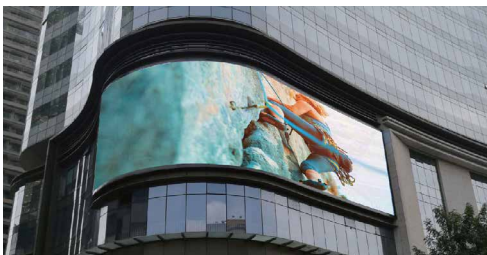
Outdoor fixed series

Feature:

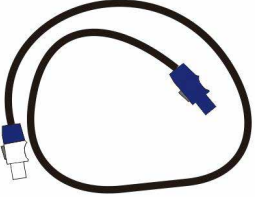
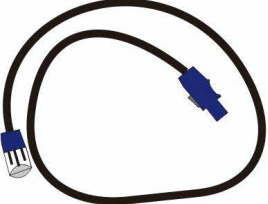
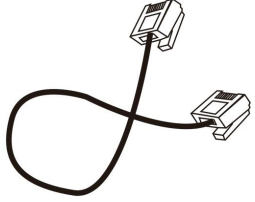

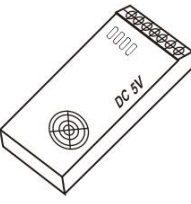

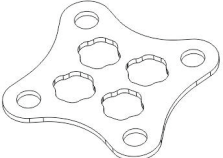
1. High precision, fast heat dissipation, wear resistance, impact resistance
2. Seamless splicing, beautiful display
3. Rich colors, good display effect
4. Convenient installation: up and down, left and right quick lock connection installation
5. Products are widely used in hotels, squares, commercial buildings, etc.

3-2 Outdoor product application range

Outdoor cabinets are display products that are fixed or hoisted outdoors and are mainly used in outdoor rentals, cultural performances, hotels, squares, commercial buildings, etc. They serve as a medium for playing videos and disseminating information.

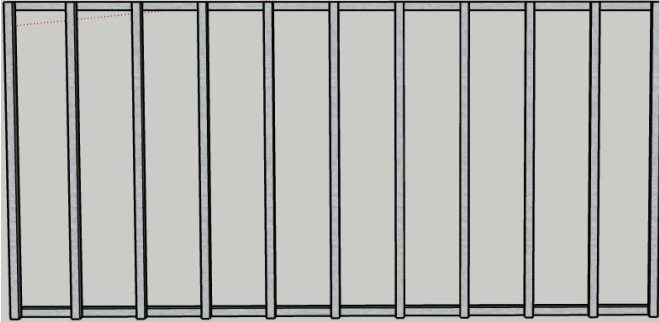
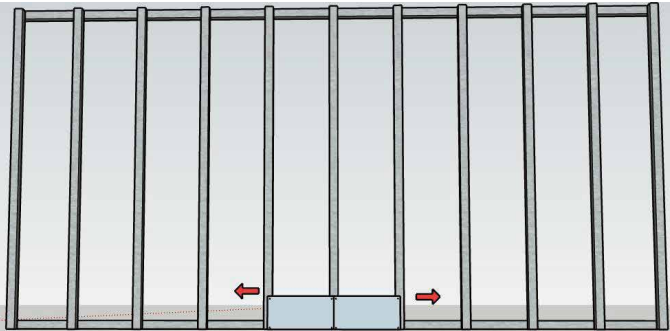
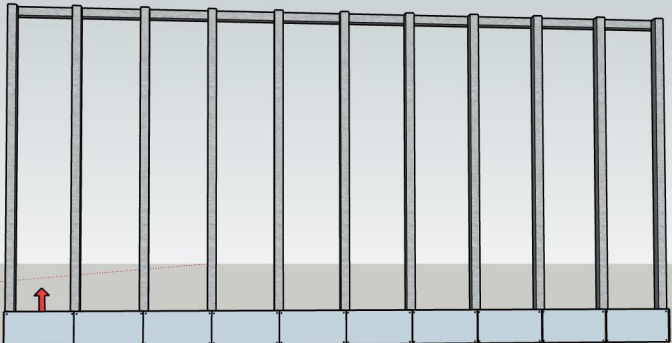
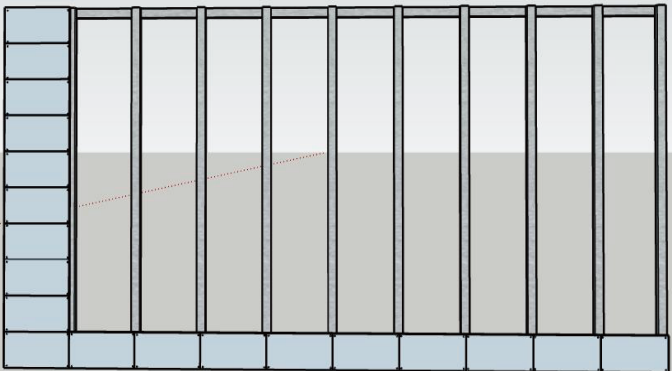
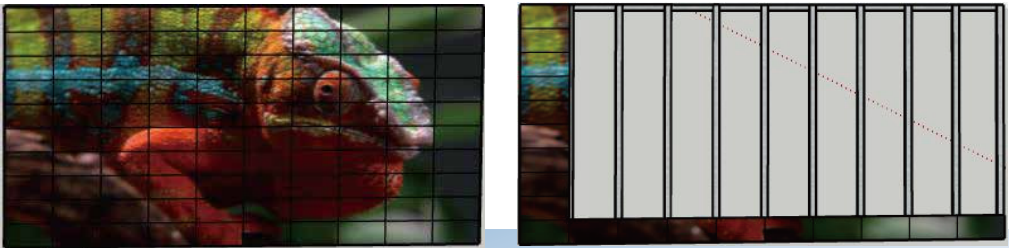


Accessories Introduction

①		<p>DC power cord (not standard) It is used to connect the power supply between boxes.</p>
②		<p>3*2.5² main power cord (not standard) It is used to connect the power supply to the AC end to provide 110V/220V (±15%)</p>
③		<p>Category 5e network cable (not standard) Connect between receiving cards or between computer and receiving card to provide signal</p>
④		<p>Cable (non-standard) The main function is to transmit signals between the receiving card and the module</p>
⑤		<p>5V/300W switching power supply (non-standard) It is used to provide power to the cabinet module, and the AC input is 110V/220V (±15%)</p>
⑥		<p>The receiving card provides signals to the module.</p>
⑥		<p>Butterfly connecting bracket (non-standard) Main function is to connect boxes to boxes, boxes to keel frames</p>

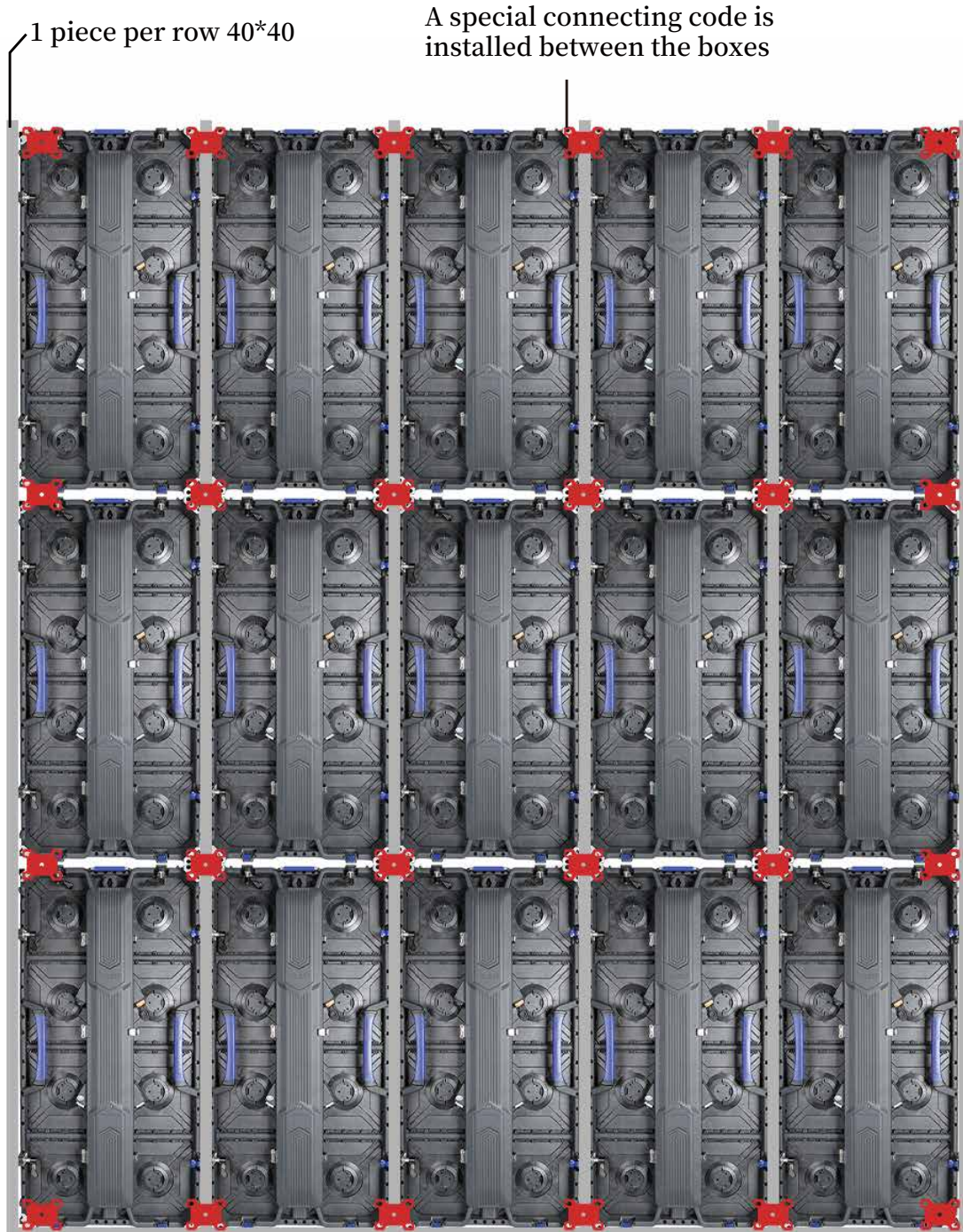
Product installation diagram

Module installation method

<p>Step 1: Before assembling the entire screen, use a level ruler to check the flatness of the installation structure to ensure the levelness of the structure.</p>	
<p>Step 2: Confirm the center point of the screen, install the first row of modules from the center point to both sides, and install the magnetic stickers on the four corners of the module.</p>	
<p>Step 3: After installing the first row of modules, adjust the gaps and misalignment between modules.</p>	
<p>Step 4: After adjusting the first row of modules, install a row of modules upwards from the two sides of the screen.</p>	
<p>Step 5: All modules are installed according to the layout requirements.</p>	

5-2 Box installation method :

It can be used for indoor rental, and supports fixed installation, hoisting installation and other installation methods to meet the needs of various outdoor installation environments.



5-3. Fixed installation instructions

Step 1: Before assembling the entire screen, use a level ruler to check the flatness of the installation structure to



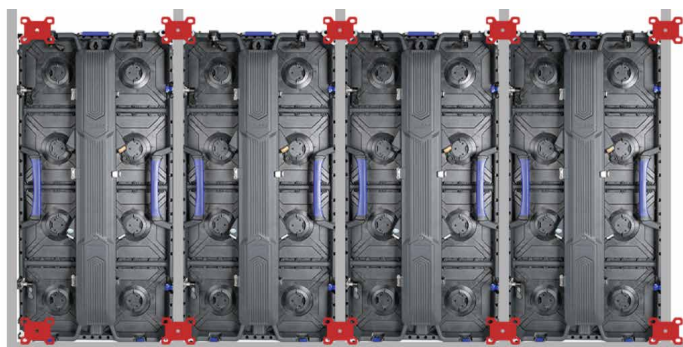
Step 2: Confirm the center point of the screen, install the first row of cabinets from the center point to both sides, and fix the four corner connecting pieces of the cabinet with screws.



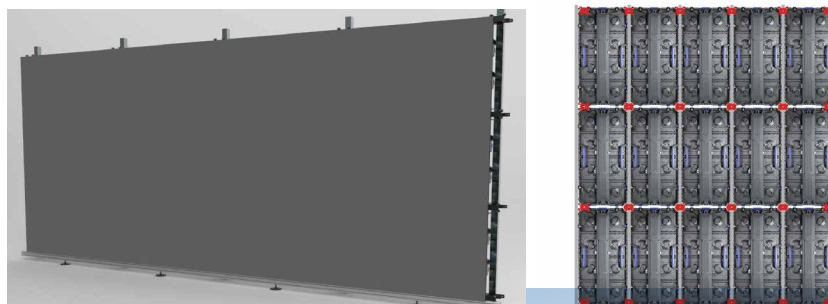
Step 3: Install the rear cabinet, adjust the misalignment between cabinets, and then fix the cabinets with connecting pieces.



Step 4: After installing the first row of cabinets, repeat steps 1, 2, and 3 to install a row of cabinets from the middle of the screen to both sides.



Step 5: All cabinets are installed according to the layout requirements.



5-4. Lifting operation instructions

Step 1: Use matching hanging beams. Before assembling the entire screen, use a level ruler to check the flatness of the installation surface of the hanging beam to ensure the flatness of the structure. Also check whether the connection lock mechanism on the hanging beam is complete.



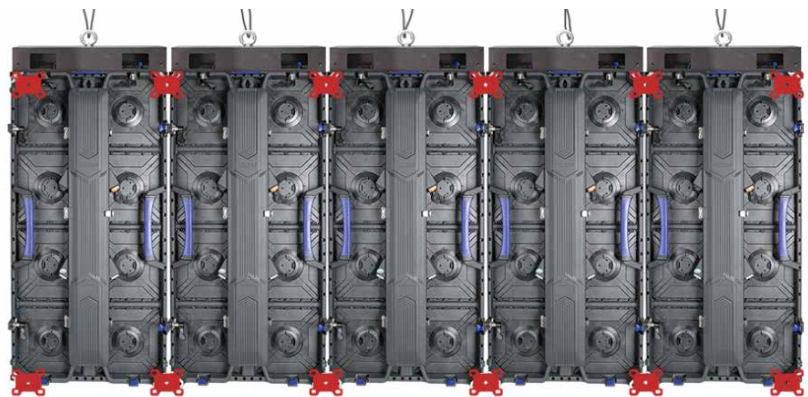
Step 2: Place two boxes vertically on the workbench, adjust the front and back levels of the two boxes to ensure there is no misalignment, and then tighten the connecting pieces and screws.



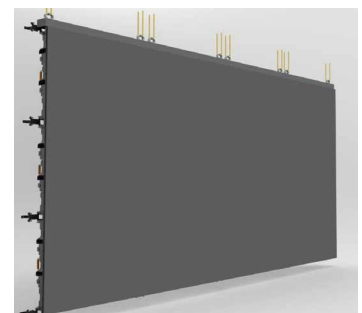
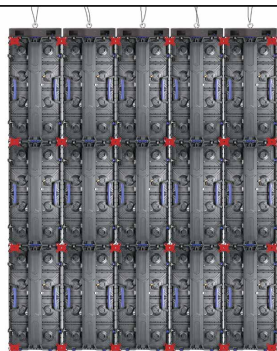
Step 3: Move the two assembled boxes to the installation position of the hanging beam, and fix the hanging beam and the box with M10*20 hexagonal screws and box connecting pieces.



Step 4: Start assembling from the middle to both sides, and make sure there is no horizontal or vertical difference between the boxes. After ensuring good horizontal flatness, close the connecting piece and tighten the screws to complete the assembly of the top row boxes.



Step 5: Repeat steps 2, 3, and 4 to install all the cabinets. Be gentle and careful when assembling, and do not bump into the cabinets due to large movements, which may cause problems such as knocking the lamp, kit or cabinet damage.

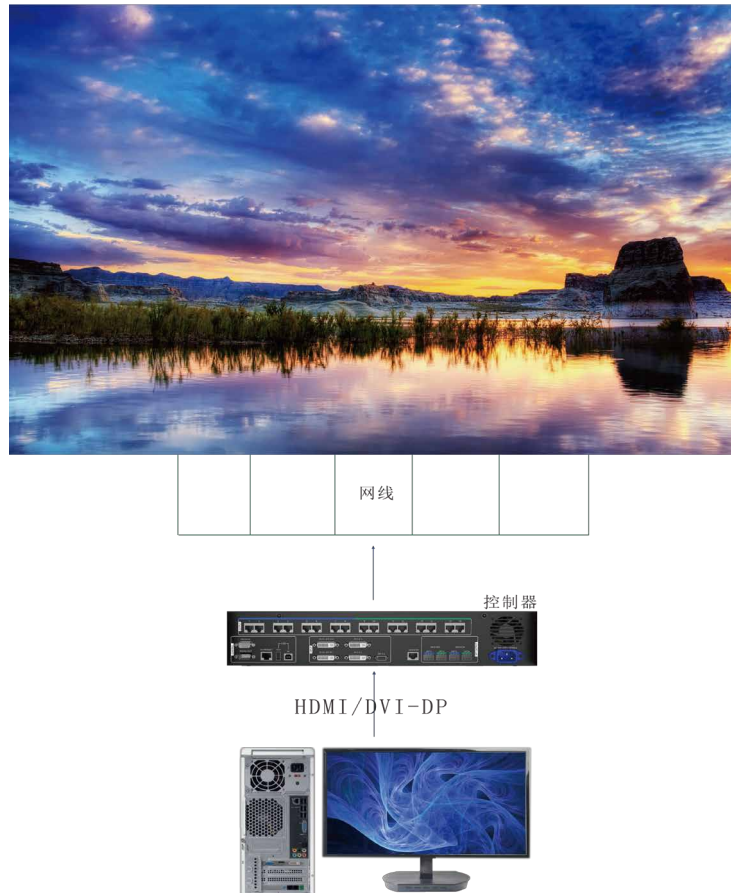


5-5. Precautions for use of the product:

- A thermometer and hygrometer shall be installed at the installation site of the display screen to monitor the surrounding environment of the screen in a timely manner. After heavy rain, the inside of the display screen shall be checked in time for moisture, water droplets, water vapor and other problems. If any problems are found, they shall be dealt with in a timely manner to reduce the damage to the display screen caused by the humid environment.
- Personnel who come into contact with the product must wear anti-static wrist straps and anti-static gloves, and all power tools used during maintenance and installation must be strictly grounded.
- Before maintaining the display screen, you need to turn off the main power of the screen before operating.
- Each group of 220V power lines (2.5mm² copper wire) is allowed to carry a maximum of 10-15 switching power supplies, and the load of each group of network connection lines depends on the system card parameters actually configured in the screen.
- To ensure the service life of LED, please do not display only static images or static text for a long time, which may cause serious attenuation of lamp brightness or lead to batch lamp failure. Please play scrolling images or text.
- During use and transportation, do not drop, push, squeeze or press the unit board to avoid damaging the display screen.
- After the module and cabinet are installed, it is necessary to check whether there is a short circuit between strong and weak electricity, whether the voltage is too high (**normal range of strong electricity: 110~220V±10V**), and whether the signal line is connected. For outdoor cabinets, it is necessary to check whether the cabinet door is closed and locked normally. If the door is not closed or locked, rainwater will enter the cabinet. If any problem is found, it needs to be dealt with as soon as possible to reduce the possibility of external factors damaging the screen.
- When installing modules without masks or with small spacing, you need to take protective measures such as static electricity and gloves, and be careful not to bump the surface of the lamp beads to avoid damaging the lamp beads and causing dead lights and bright lines.

6.Connection diagram introduction

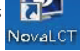
6-1 System connection diagram

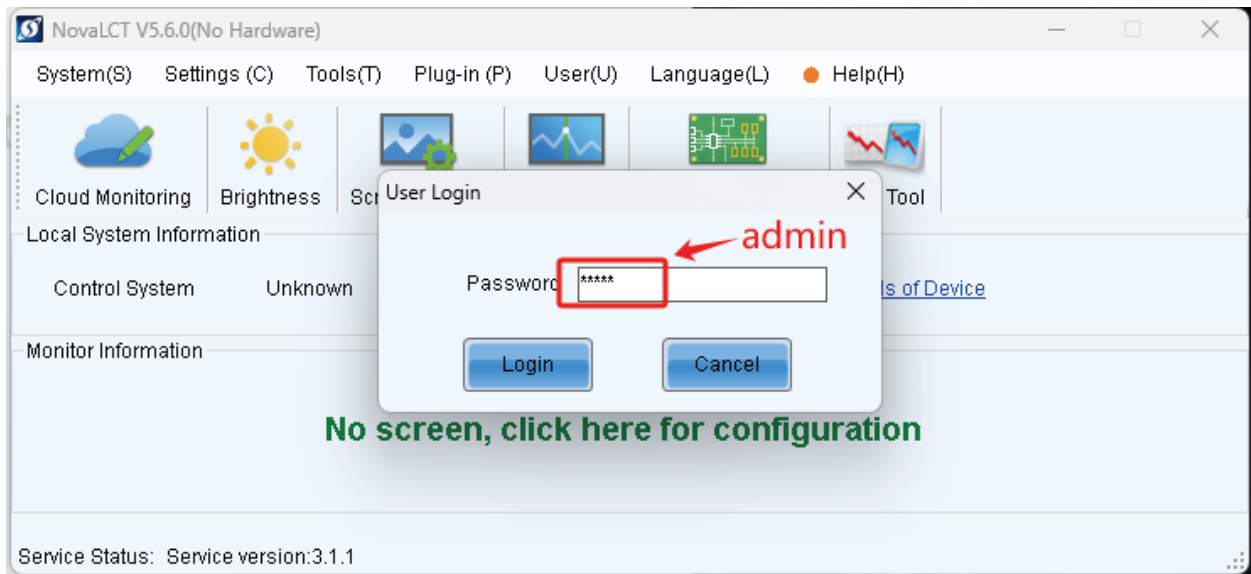


6-2. DVI/HDMI, USB cable connection

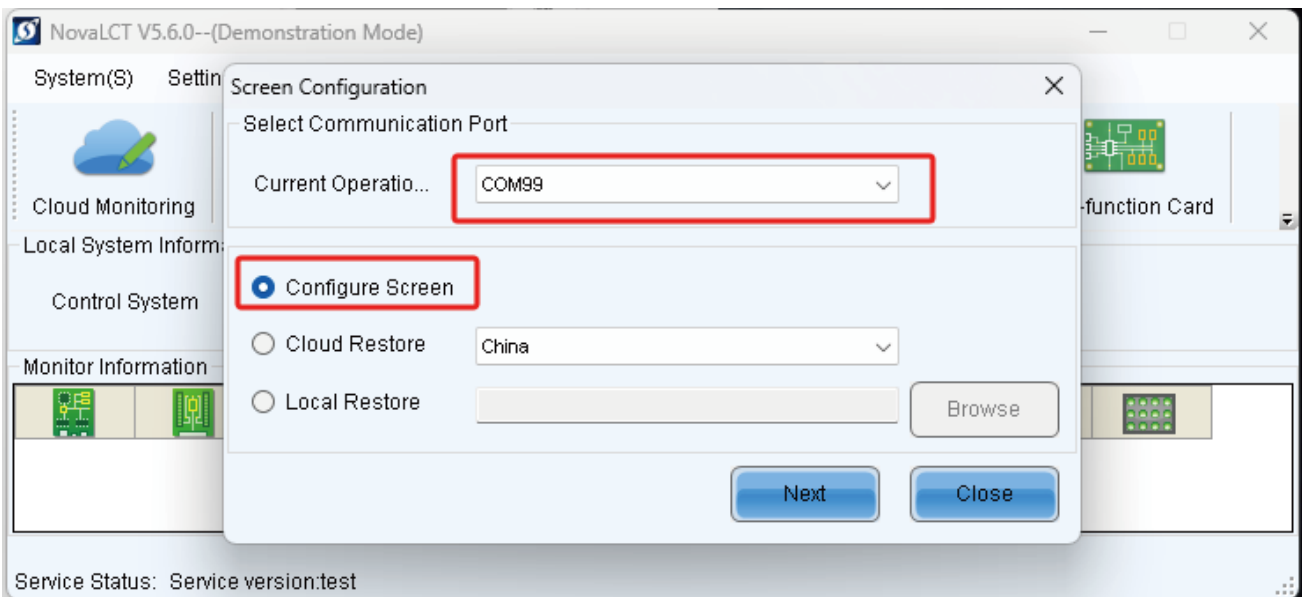


7. Software Operation

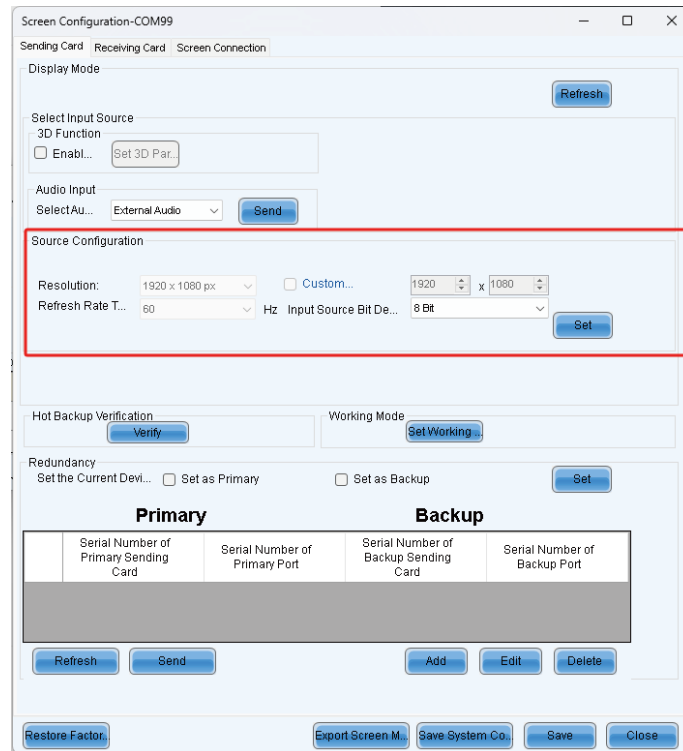
1. Double-click the software icon on the computer desktop “” Enter the software home page;
2. Click "Login", select "Synchronous Advanced Login" in the drop-down options, and enter the password "admin", as shown in the figure below:



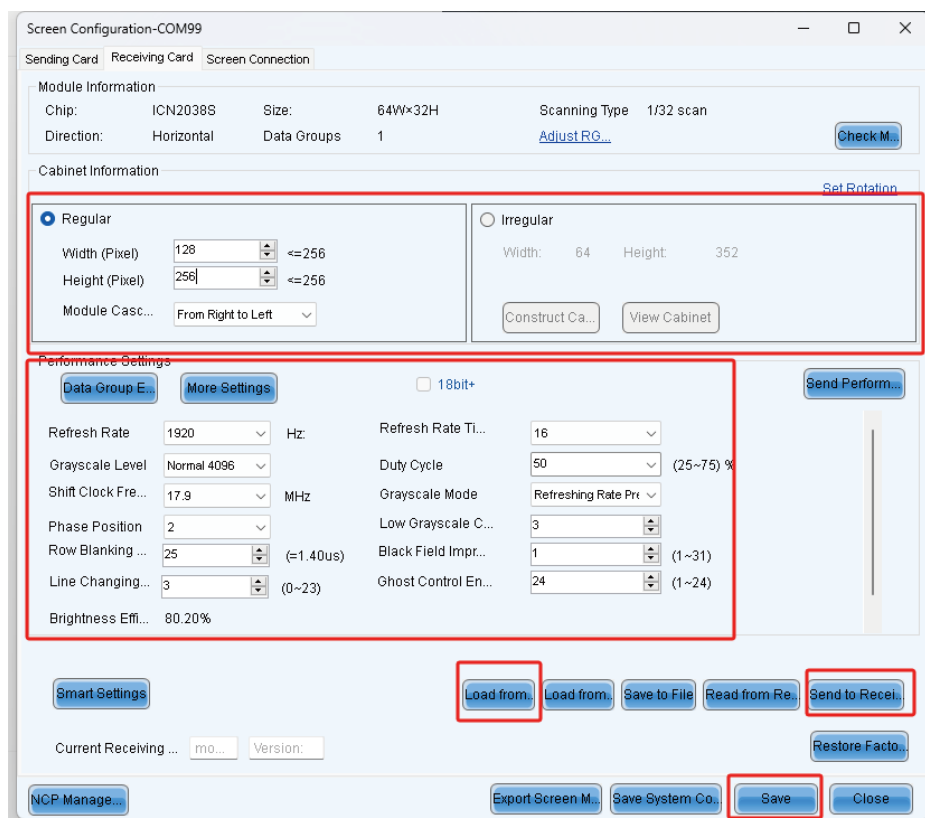
3. After logging into the software, click “Display Configuration”, confirm that the communication port is connected (if not, the communication port will not appear), and then click “Next”, as shown in the figure below:



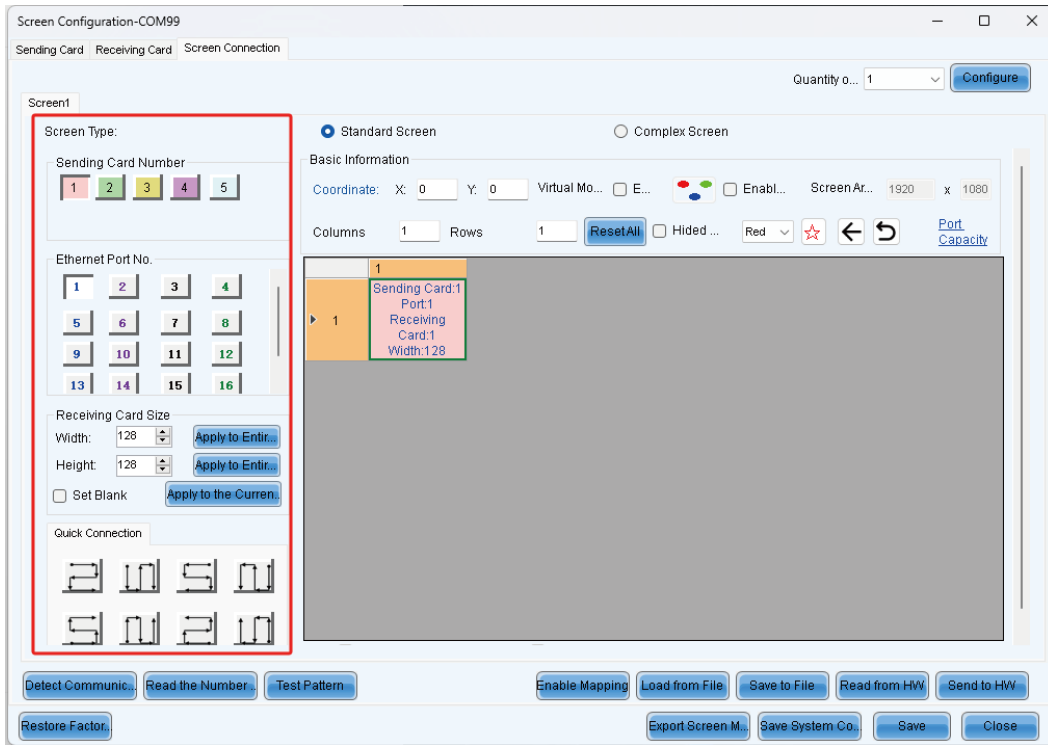
4. Click "Send Card" to confirm that the resolution of the sending card is consistent with the resolution of the computer graphics card, as shown in the figure below:



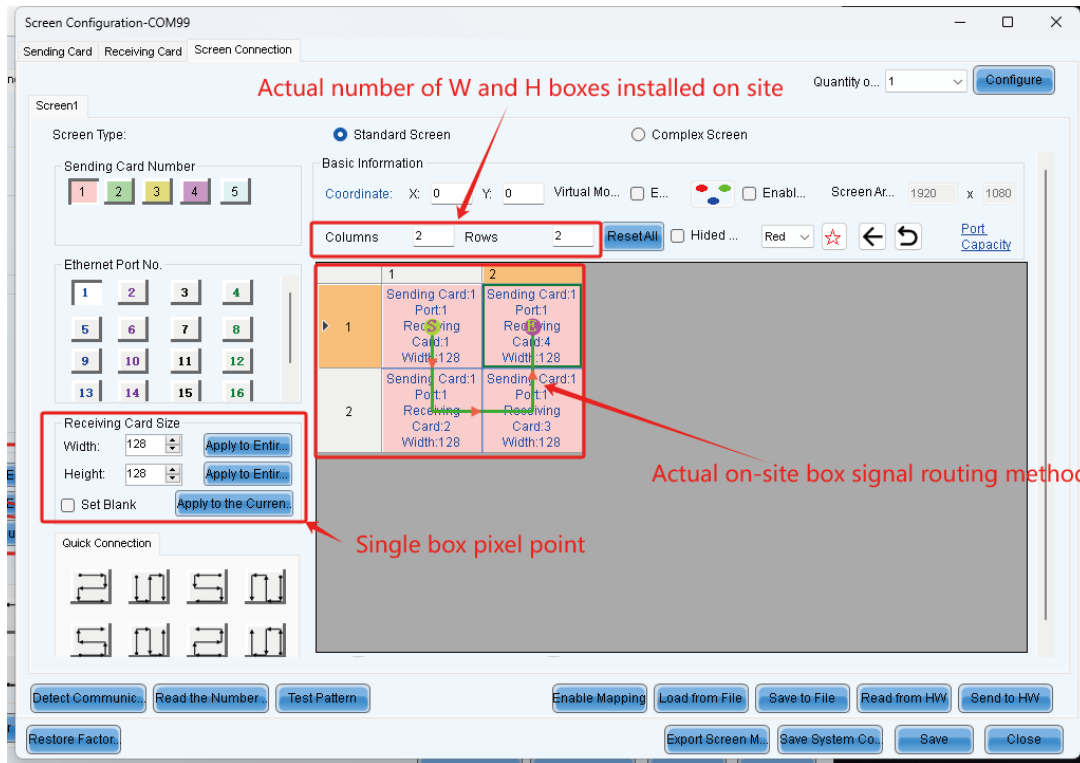
5. Click "Receiving Card", set the parameters according to the on-site installation data, then click "Load from File" to add the loading file, and finally click "Send to Receiving Card" to solidify, as shown in the figure



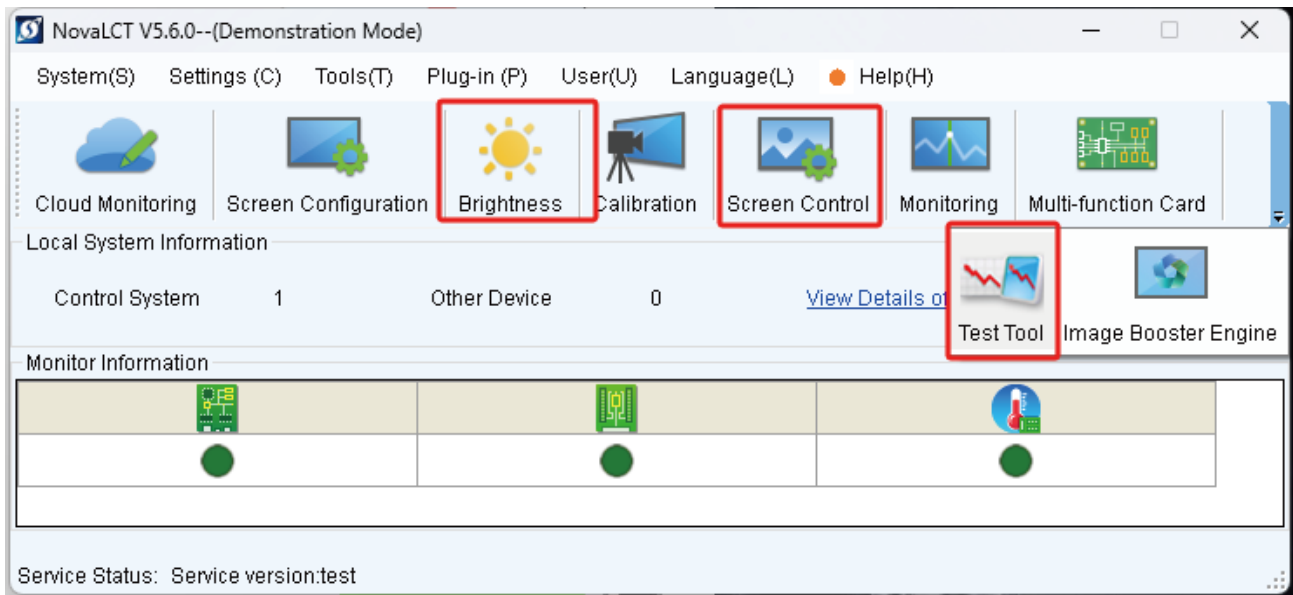
6.Click "Display Connection", set the parameters according to the on-site installation data, and then click "Send to Hardware" to solidify, as shown in the figure:



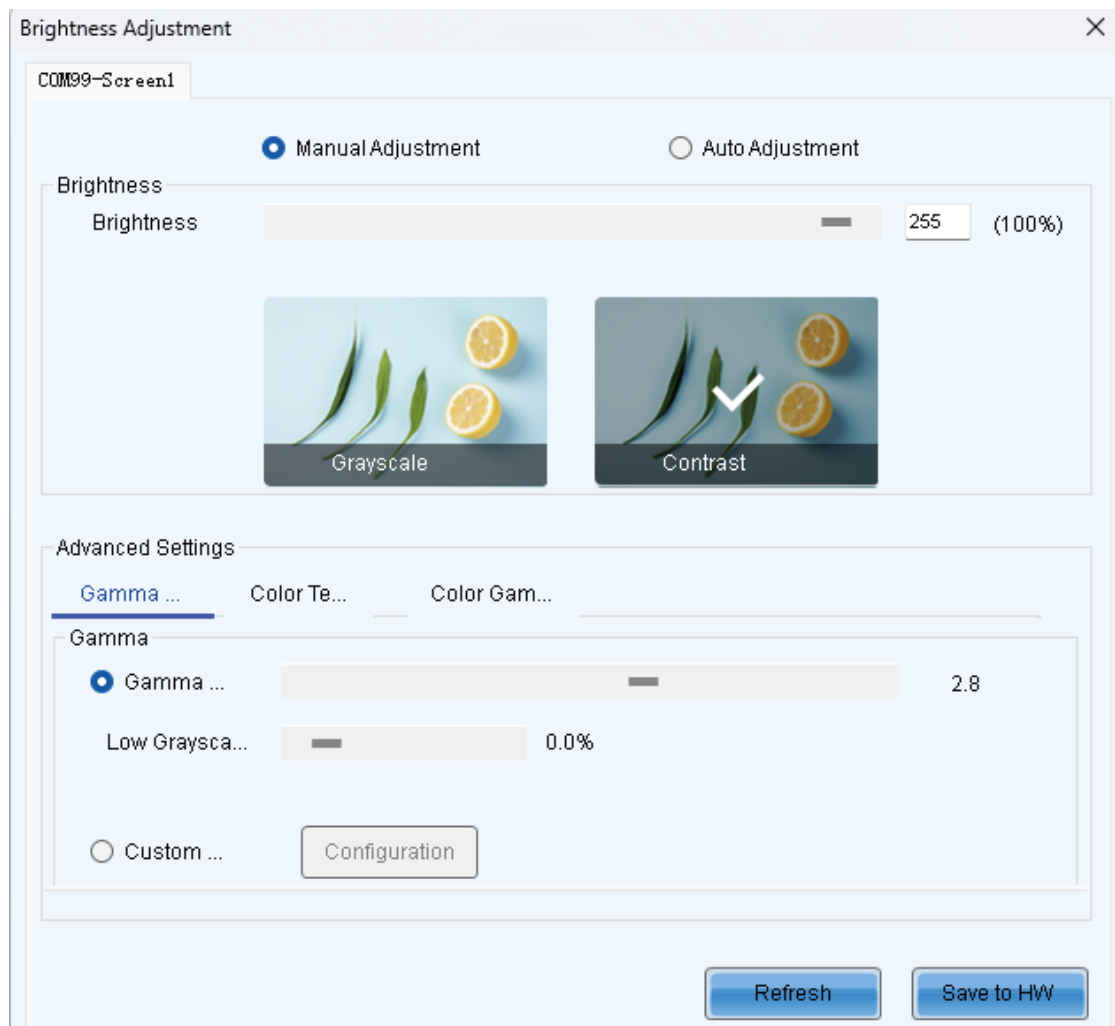
Case:



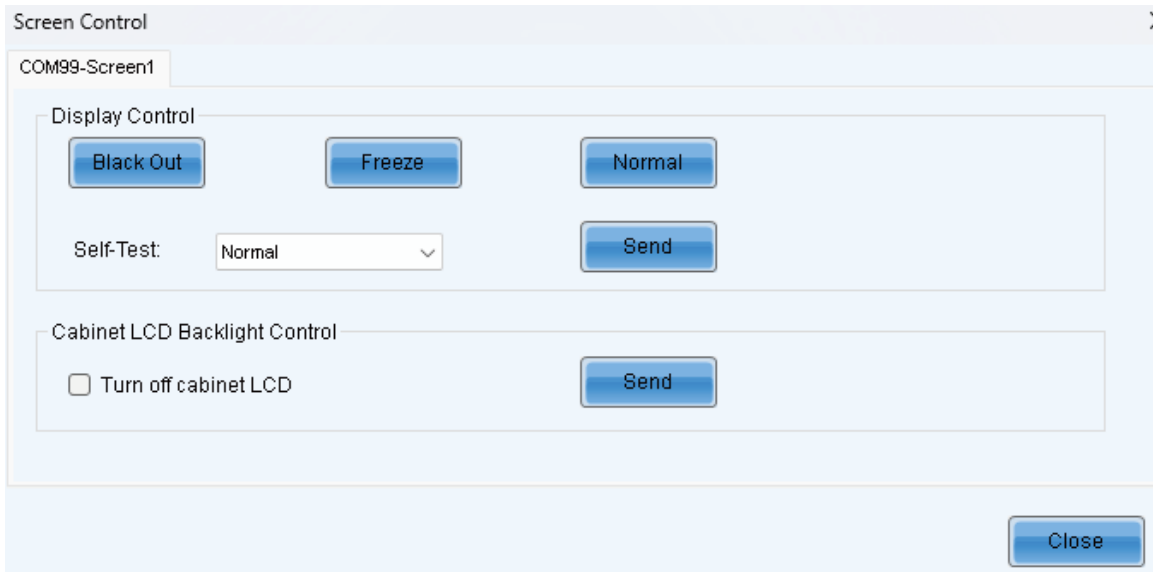
7. Return to the interface and click "Brightness", "Screen Control", and "Test Tool" to control the brightness, screen, and test of the display, as shown in the figure below:



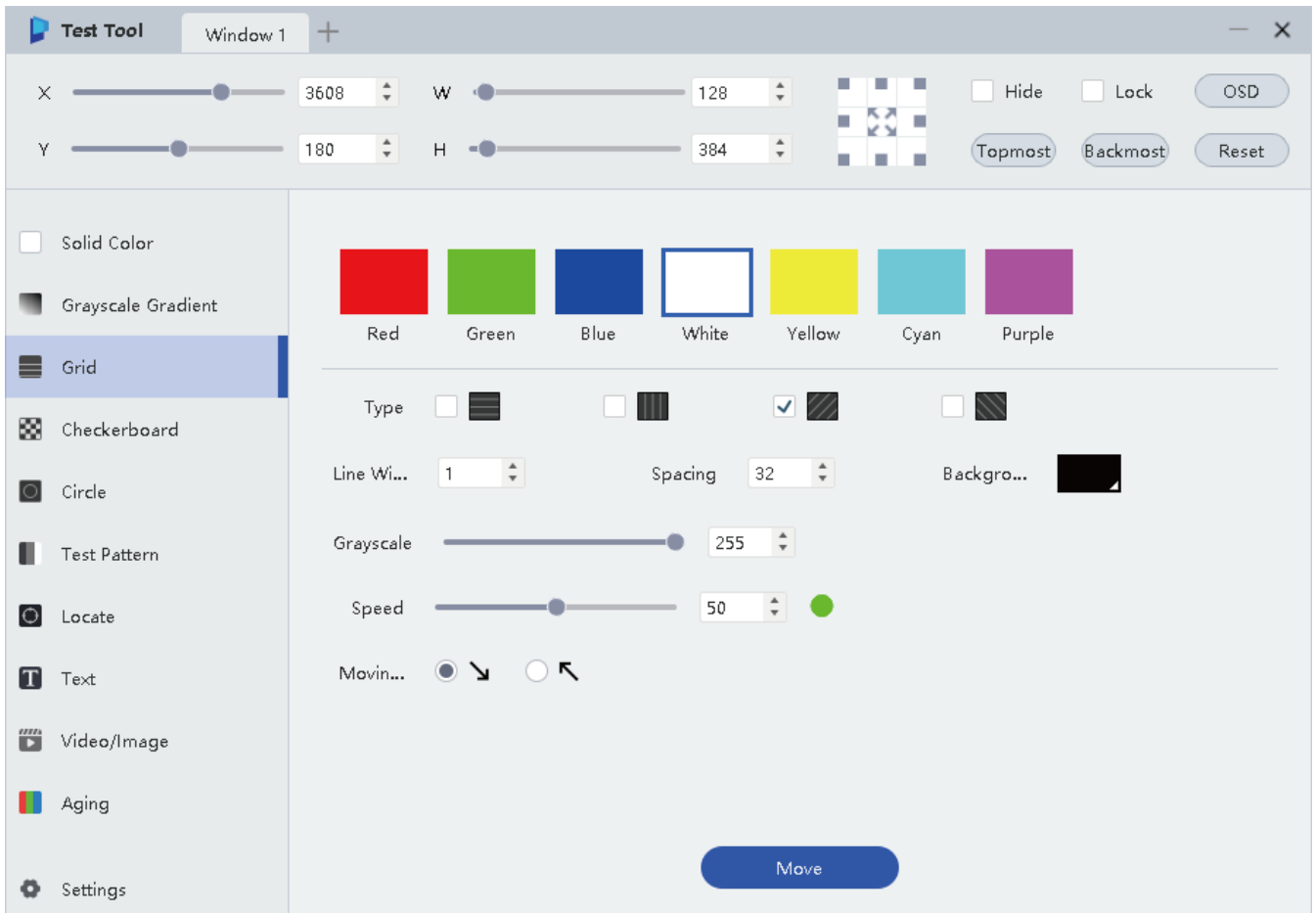
Brightness adjustment interface:



Display control interface:



Display screen test tool interface:



Common problems and solutions

Question 1: A certain module has no display!



Solution: Remove the module without display, check whether the module is installed in the correct direction, whether the signal cable is inserted into the input port, and whether the 5V power cable or signal cable is plugged in.

Question 2: A certain area is not displayed!



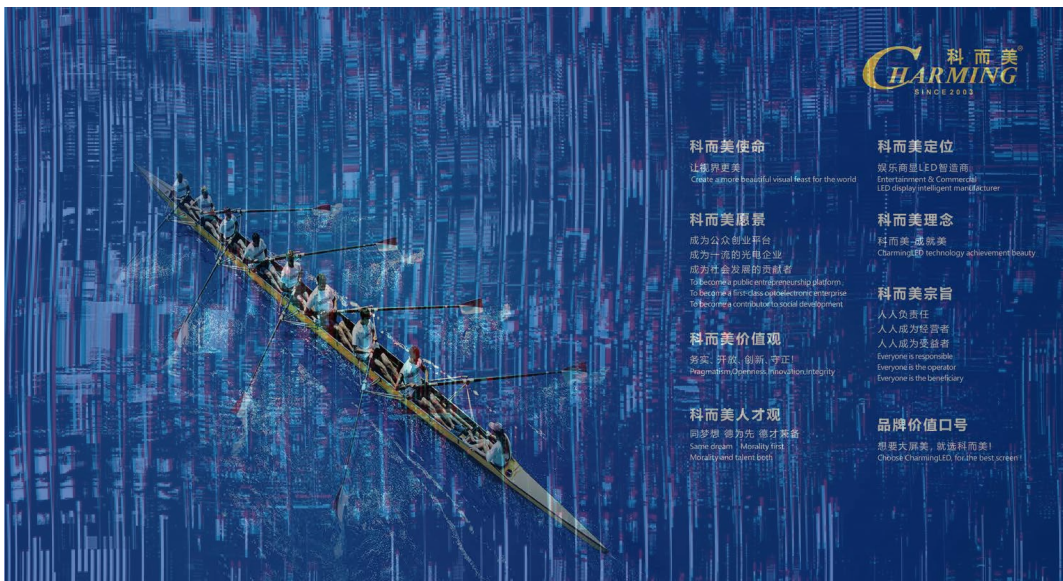
Solution: First, you can use a multimeter to check whether the power supply has no 5V output. Second, check whether the receiving card has signal input. You can observe the green signal indicator on the receiving card. If it flashes regularly (once per second), it proves that the signal input of the receiving card is normal. If it flashes irregularly, you need to check whether the network cable is connected normally. If there is no output, replace the power supply. If there is no signal input to the receiving card, replace the main signal line or remake the crystal head.

Question 3: The entire screen has no display!



Solution: Check whether the 220V power supply of the screen is turned on normally and inputs normal voltage, whether the video processor is powered on and turned on, and whether the HD signal of the video processor is connected normally. If there is a problem with the 220V power supply, please disconnect the screen circuit breaker in time and ask a professional electrician to check it. If the HD signal of the video processor is not input normally, you can try to replace the HD cable or the HD output port of the computer.

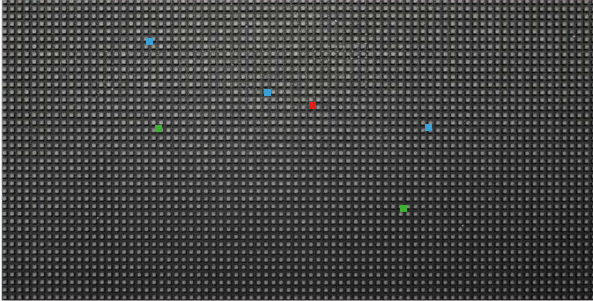
Question 4: Part of the screen flickers irregularly!



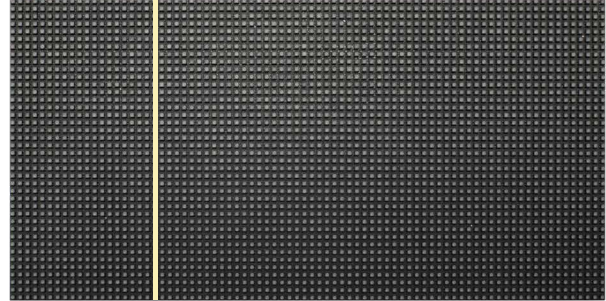
Solution: Check whether the 220V power supply voltage of the screen is stable, whether the 5V load of the switching power supply is overloaded, whether the main signal line of the screen is broken/poor contact causing signal interference, etc.

8.Common problems and solutions

Question 5: The screen often has dead lights or bright lines for no



Dead Lights



Bright Line

Solution: LED modules are electronic products, especially lamp beads, which are vulnerable parts. They are easily broken down by static electricity or corroded by moisture, resulting in dead lights and bright lines. If dead lights or caterpillars often appear for no reason, it is necessary to detect whether the power supply of the screen and the ground wire of the steel frame are normal and effective, whether the on-site environmental humidity exceeds 65%RH, and whether there is a direct blow from the air-conditioning outlet at the screen position. If the above factors exist, they need to be rectified immediately to ensure that the power supply of the screen and the grounding of the steel frame are normal, effective dehumidification is carried out on site, and the air outlet of the air conditioner needs to change the air outlet direction to avoid direct blowing of the screen. If the above are effective, the service life of the screen can be guaranteed to be normal or long.

After-sales service

Product After-Sales Service Description

(Customer Notice)

In the spirit of "high quality, excellent service, and development", CHARMING LED solemnly promises you with the concept of "high-quality products, reasonable prices, and considerate services" and the principle of responsibility and openness.

1.The products are issued with inspection certificates and detailed installation and use instructions to ensure that users can correctly install and use our group's products, as well as answers to common problems and timely provide solutions to clients.

2. After the products are shipped, our Group will fax or scan a shipping list to the user. Please receive the goods according to the shipping list and check them one by one. If you find any damage, please do not sign for them and contact our Group in time. Our Group will communicate with the logistics company and tell the user the negotiation results. If the user does not check and finds damage or missing goods in the future, all losses will be borne by the customer.

3. The Group guarantees that all products shipped out of the factory are produced and inspected in accordance with relevant national standards, and unqualified products will never be shipped out of the factory. The Group guarantees to strictly perform and honor the three guarantees of products and strictly implement the relevant provisions of the national industrial product after-sales service. For the whole set (the Group guarantees one year for all component products) of the factory products within six months from the date of shipment or within twelve months of product installation (whichever comes first), if the buyer can prove that the product itself has design, material or processing defects and submits a written application to the Group, the Group will recall or replace the defective products free of charge.

4.If a user raises a quality objection to the Group's products, the Group guarantees to make a handling suggestion by phone or email within 24 hours after receiving the user's objection. If an on-site solution is required, after consultation, professional technical service personnel will be dispatched to the site to solve the problem, and the service personnel will not leave until the quality problem is solved. The Group will archive the product quality problems reported by each user and the results of the handling.

5. Explanation of fees:

①: During the use of our products, if the customer finds that the parts are damaged, the customer must first return the damaged parts to our group; our group will test the parts and analyze the reasons; if it is a quality problem of our products, our group will bear the freight and free repair or replacement; if it is found that it is not a quality problem of our products, our company will charge the corresponding fees according to the ex-factory price of the product. If the customer refuses to pay, our group will stop the after-sales service.

②: If the defective products are within the warranty scope, if they are repaired according to general standards, the group will provide free repairs; if they are repaired according to the delivery standards, the group will charge a certain cost according to the specific circumstances. If the defective products are not within the warranty scope, if they are repaired according to general standards, the group will provide free repairs; if they are repaired according to the delivery standards, the group will charge the corresponding cost of the whole set of products according to the specific circumstances.

③: In any case, our group will not bear the labor, materials, equipment, engineering or other related joint costs caused by the repair or replacement of defective products. The Group's after-sales service commitment for this product can replace other express or implied product quality guarantees and can be regarded as the buyer's sole compensation and the seller's sole liability.

10. Non-after-sales service guarantee scope:

- 1. Damage caused by improper use, use environment and force majeure (such as floods, fires, earthquakes, lightning strikes, etc.) and other human or objective factors is not covered by the warranty. The Group can still provide repair services if it can be repaired, but the corresponding fees will be charged according to the repair fee standards. If it cannot be repaired, the Group will no longer provide repair, return and other after-sales services.**
- 2. For products beyond the warranty period, the Group will charge the corresponding fees according to the repair fee standards.**
- 3. The transportation costs incurred by the above after-sales services shall be borne by the customer**

Attention:

The above warranty period is the minimum warranty period promised by the company for the product. The company does not undertake free repairs and replacements outside the warranty period. This system is revised every six months according to specific circumstances, and the new version has a natural replacement effect on the old version.

The above after-sales service terms are subject to the final interpretation of the Keermei Group. If new regulations are introduced, the new regulations shall prevail and the original regulations shall be automatically terminated.

科而美集团

CHARMING GROUP



CHARMING is an LED display application enterprise that integrates production, sales, and research and development. It has obtained certificates such as "Guangdong Province Specialized, Refined, Unique, and New Small and Medium sized Enterprise", "National High tech Enterprise", "Guangdong Province Innovative Small and Medium sized Enterprise", "Foshan Gazelle Enterprise", and "LED Display Module Group Standard Drafting Unit". It has developed into a world-class entertainment commercial display LED intelligent manufacturer.

CHARMING

科而美集团旗下公司

CHARMING GROUP COMPANY



广东科而美光电有限公司
CHARMING CO.,LTD

佛山·南海
Foshan · Nanhai



美国公司
C&E TECH USA INC
美国·洛杉矶
Los Angeles, USA

MADRIX · 中国
MADRIX CHINA
佛山·南海
Foshan · Nanhai

